

# ASCII Report

Have you ever wanted a text-only printout of your SSG data instead of, or in addition to the regular SSG?

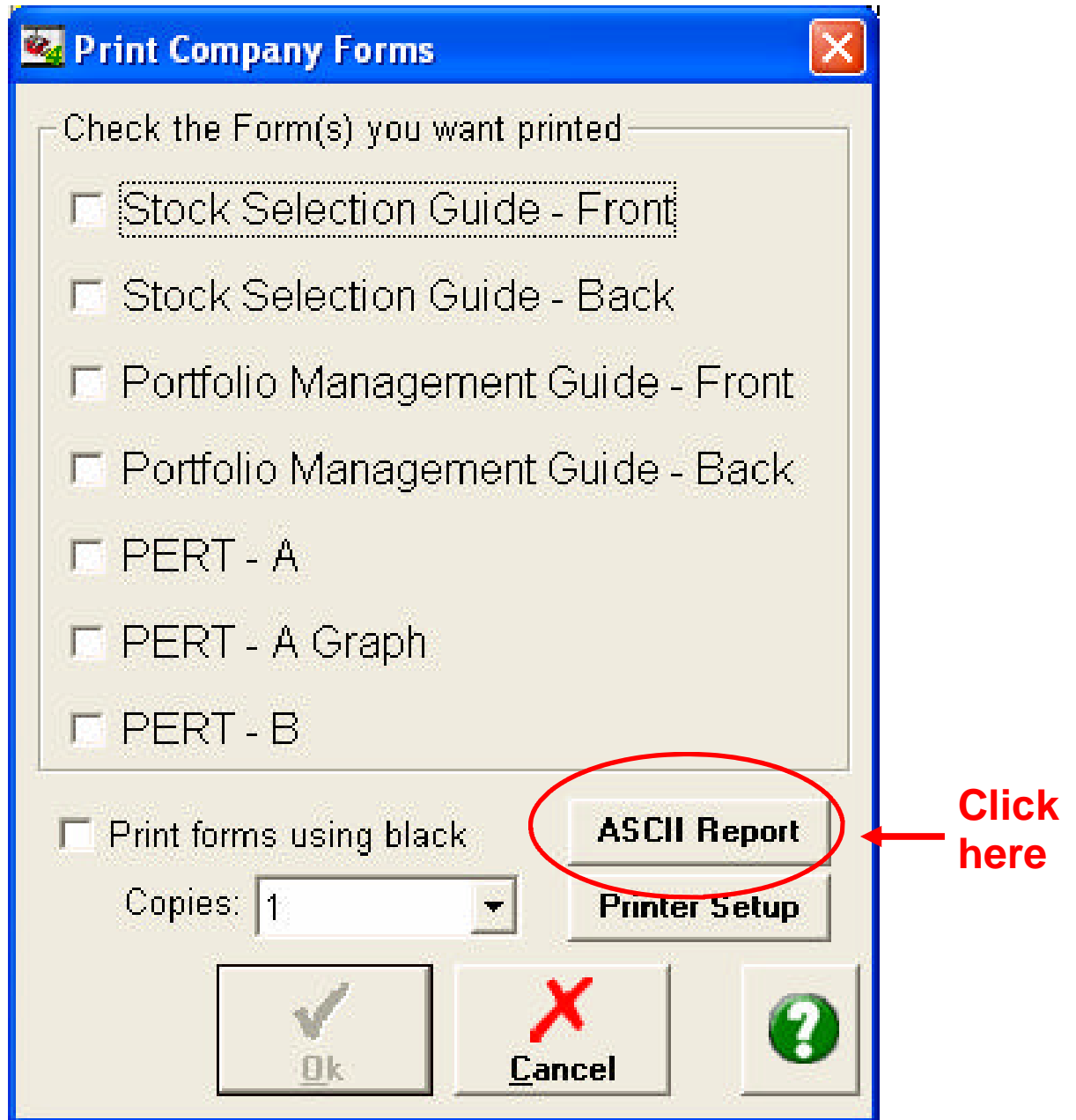
Well, now you can have it. This text-only report is called an ASCII report [American Standard Code for Information Interchange.]

The first step is to check to ensure that you have a **completed** SSG on the company data you want to print out.

Then open the company. Go FILE | PRINT.

This display that results is shown on the next page....

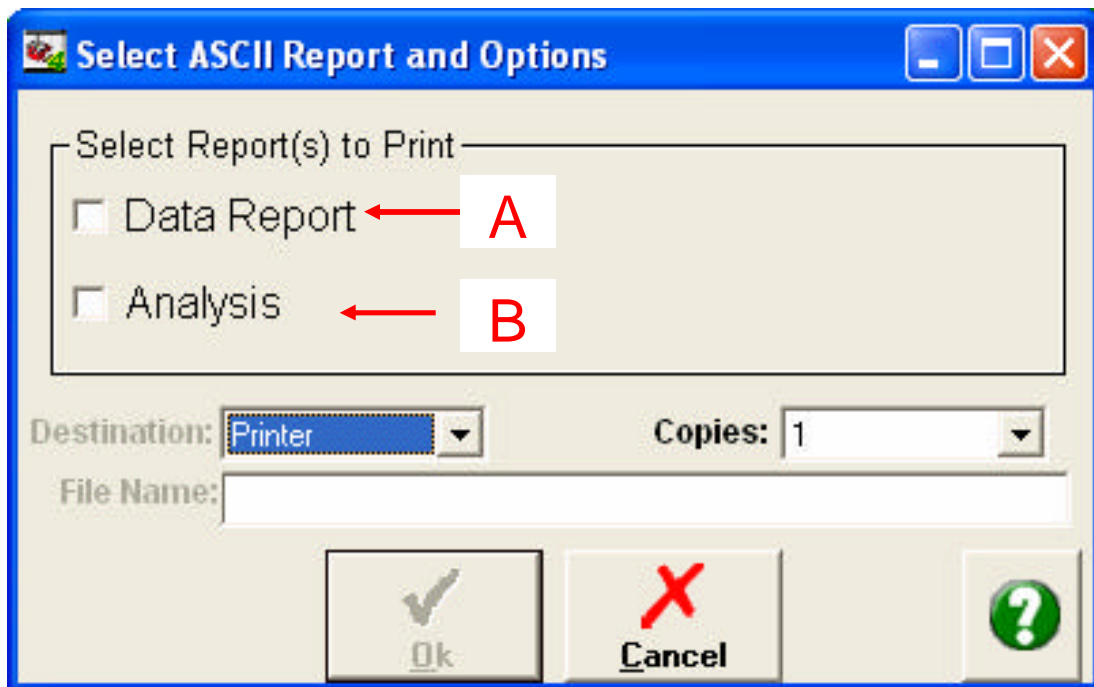
# ASCII Report



## ASCII Report

A— This is the short form of the report. It contains only historical data. No judgments, such as forecast EPS growth rates, are included.

B— The whole report, containing judgment and historical data.



To see an example, go back to the page for this week's Toolkit Tip and click on "Example ASCII Report."

Ascii

NAIC INVESTOR'S TOOLKIT ANALYSIS

REPORT=====06/25/2002

Cardinal Health [Teaching(CAH-TG NYSE) Current Price: 43.2 Current P/E: 19.9  
FY 1999 ended 6/30/1999 Data through 1st quarter FY  
2000(9/30/1999)

Prepared by: RSC

Source of data: Value Line (12/10/1999)

Capitalization: =====  
=====

Total Debt (\$M): \$1,542.9 Debt/Capital: 30.4%  
% Insiders % Institution  
Preferred(\$M): .0 N/A N/A  
Common Sh(M): 280.3 2.9 78.1

Quarterly Performance (Qtr End 9/30/1999)

=====  
Sales(\$M) EPS(\$)  
Latest Quarter: 5,829.0 0.53  
Year Ago Quarter: 4,999.0 0.42  
Percentage Change: 16.6% 26.2%

Section 1 - Annual Historical and Estimated Future Growth Rates

=====  
Historical Sales Growth: 38.6 Outliers: None  
Historical EPS Growth: 21.3  
Estimated Future Sales Growth: 19.0  
Estimated Future EPS Growth: 18.0 Projection started from last annual data  
point

Section 2 Evaluating Management

=====  
5 yr. Avg. Trend Outliers  
2A % Pre-Tax Profit on Sales: 3.2 UP None  
2B % Earned on Equity: 16.5 EVEN None

Section 3 - Price-Earnings History

=====  
Outliers  
3B7 Average Low Price: \$ 31.90 None  
3D7 Average High P/E: 36.00 98  
3E7 Average Low P/E: 21.30 98  
3G Average % Payout: 4.70% None  
Average P/E: 28.60 Current P/E: 19.90 Projected P/E: 16.89

Section 4 - Evaluating Risk and Reward

=====  
4A Average High P/E: 25.00  
Estimated High EPS 4.71  
Forecast High Price: 117.80  
4B Average Low P/E: 18.00  
4B Estimated Low EPS: 2.06  
Selected Estimated Low Price: 32.00

4C Zoning

=====  
32.00 -- Buy -- 53.45 -- Hold -- 96.35 -- Sell -- 117.80  
Zoning set at: 25%-50%-25%  
Current Price of 43.25 is in the 'Buy' range

4D Upside/Downside

Ratio: =====

Ascii

Upside/Downside Ratio: 6.6  
Relative Value: 69.6      Projected Rel. Val.: 59.1

Section 5 - Five-Year Potential

=====

5A Present Yield:	0.2	5B Average Yield:	0.4
5C Total Return(simple):	34.9	Total Return(compounded):	26.1

Ret: 21.8      Projected Avg.

Preferred Procedure Calculations

=====

	Default	Override	
Projected 5 Year Sales @	19.0%	0.0	51,261.3
Less Expenses	3.2%	0.0	-49,620.9
Less Taxes	36.6%	0.0	-600.4
Less Preferred Dividends	\$0.0	0.0	0.0
			=====
Projected 5 Yr Total Earnings			1,040.0
Divided by Shares Outs.	280.3	0.0	3.71
Calculated Growth Rate			12.5

Prepared using the NAIC Investor's Toolkit 6/25/2002 10:56:34 AM